

Courtesy Of George M Fahmy Of Mozaic Realty Group

# \$555,810 - 5100 Parc Reunis Way, Beaumont

MLS® #E4428127

**\$555,810**

3 Bedroom, 2.50 Bathroom, 1,703 sqft  
Single Family on 0.00 Acres

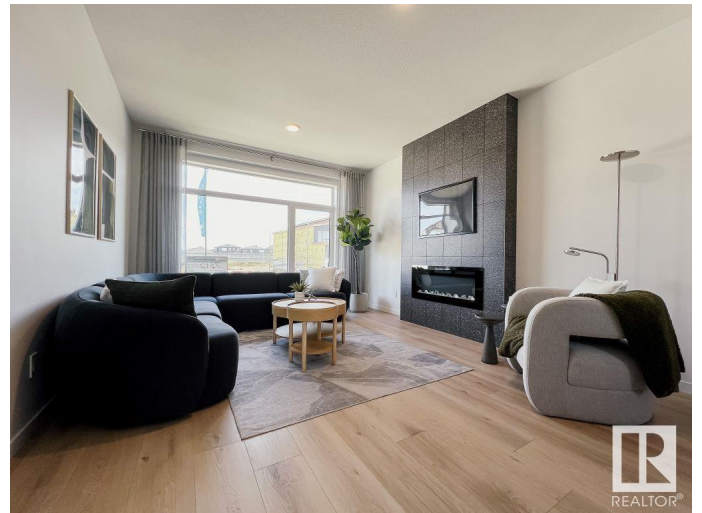
Elan, Beaumont, AB

Welcome to the stunning Versa Nixon 20, a laned home that perfectly blends functionality and modern design. The main floor features a versatile den – ideal for a home office, playroom, or guest space – offering flexibility to suit your lifestyle needs. Upstairs you will find a spacious bonus room perfect for family movie nights or play area or additional living space. The open concept main floor is bright and inviting, with thoughtful finishes throughout. The separate side entrance and glass railing are an added bonus! UNDER CONSTRUCTION! \*photos are for representation only. Colors and finishings may vary\*

Built in 2025

## Essential Information

|                |               |
|----------------|---------------|
| MLS® #         | E4428127      |
| Price          | \$555,810     |
| Bedrooms       | 3             |
| Bathrooms      | 2.50          |
| Full Baths     | 2             |
| Half Baths     | 1             |
| Square Footage | 1,703         |
| Acres          | 0.00          |
| Year Built     | 2025          |
| Type           | Single Family |



|          |                        |
|----------|------------------------|
| Sub-Type | Detached Single Family |
| Style    | 2 Storey               |
| Status   | Active                 |

### Community Information

|             |                      |
|-------------|----------------------|
| Address     | 5100 Parc Reunis Way |
| Area        | Beaumont             |
| Subdivision | Elan                 |
| City        | Beaumont             |
| County      | ALBERTA              |
| Province    | AB                   |
| Postal Code | T4X 3E4              |

### Amenities

|           |                                |
|-----------|--------------------------------|
| Amenities | Deck, Front Porch, See Remarks |
| Parking   | Parking Pad Cement/Paved       |

### Interior

|                   |   |
|-------------------|---|
| Interior Features | ensuite bathroom  |
| Appliances        | Dishwasher-Built-In, Microwave Hood Fan, Refrigerator, Stove-Electric |
| Heating           | Forced Air-1, Natural Gas   |
| Fireplace         | Yes   |
| Fireplaces        | Insert  |
| Stories           | 2   |
| Has Basement      | Yes   |
| Basement          | Full, Unfinished  |

### Exterior

|                   |                      |
|-------------------|----------------------|
| Exterior          | Wood, Vinyl          |
| Exterior Features | Schools, See Remarks |
| Roof              | Asphalt Shingles     |
| Construction      | Wood, Vinyl          |
| Foundation        | Concrete Perimeter   |

### School Information

|            |                           |
|------------|---------------------------|
| Elementary | École Bellevue School     |
| Middle     | École Dansereau Meadows   |
| High       | École Secondaire Beaumont |

### Additional Information

Date Listed March 25th, 2025

Days on Market 157

Zoning Zone 82

DATA IS DEEMED RELIABLE BUT IS NOT GUARANTEED ACCURATE BY THE REALTORS® ASSOCIATION OF EDMONTON. COPYRIGHT 2025 BY THE REALTORS® ASSOCIATION OF EDMONTON. ALL RIGHTS RESERVED. Trademarks are owned or controlled by the Canadian Real Estate Association (CREA) and identify real estate professionals who are members of CREA (REALTOR®, REALTORS®) and/or the quality of services they provide (MLS®, Multiple Listing Service®)

Listing information last updated on August 29th, 2025 at 1:17pm MDT