

\$500,000 - 14303 101 Avenue, Edmonton

MLS® #E4427437

\$500,000

0 Bedroom, 0.00 Bathroom,
Single Family on 0.00 Acres

Grovenor, Edmonton, AB

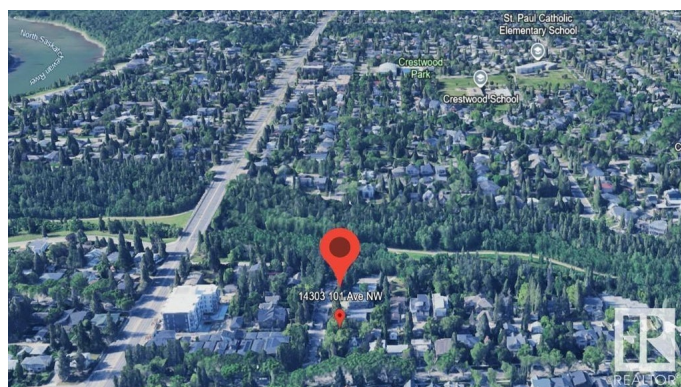
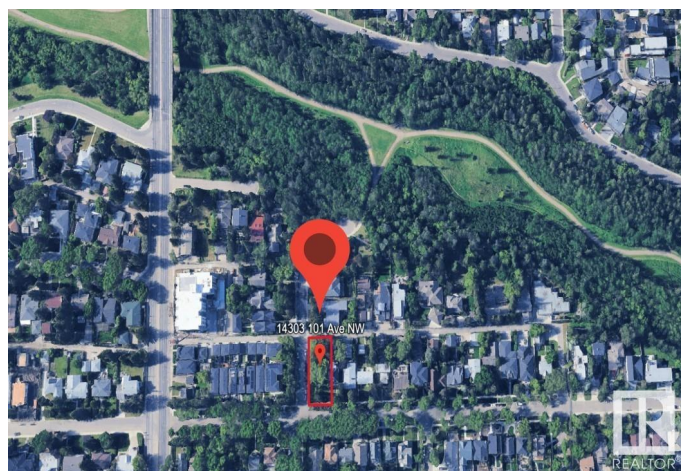
Turnkey Build Ready Tri-Plex with 2 Legal Basement Suites on a Corner Lot in Prestigious Grovenor just Steps to MacKinnon Ravine & MacKinnon Ravine Park. Many options are available. This property is permit ready and all plans are included in purchase price or just buy this Dream Lot. Develop the Suited Tri-Plex yourself, or the builder will complete it for you, or Design your Own Custom Home and the builder will develop it with you. The neighborhood is surrounded with newer Executive Homes and more Quality Developments Underway.

Essential Information

| | |
|-----------|-----------------|
| MLS® # | E4427437 |
| Price | \$500,000 |
| Bathrooms | 0.00 |
| Acres | 0.00 |
| Type | Single Family |
| Sub-Type | Vacant Lot/Land |
| Status | Active |

Community Information

| | |
|-------------|------------------|
| Address | 14303 101 Avenue |
| Area | Edmonton |
| Subdivision | Grovenor |
| City | Edmonton |



| | |
|-------------|---------|
| County | ALBERTA |
| Province | AB |
| Postal Code | T5N 0K7 |

Amenities

| | |
|---------|--|
| Parking | Parking Pad Cement/Paved, Stall, See Remarks |
|---------|--|

Interior

| | |
|---------|-------------|
| Heating | Natural Gas |
|---------|-------------|

Exterior

| | |
|-------------------|--|
| Exterior Features | Corner Lot, Level Land, Park/Reserve, Picnic Area, Public Swimming Pool, Public Transportation, Schools, Shopping Nearby |
|-------------------|--|

Additional Information

| | |
|-------------|------------------|
| Date Listed | March 25th, 2025 |
|-------------|------------------|

| | |
|----------------|----|
| Days on Market | 37 |
|----------------|----|

| | |
|--------|---------|
| Zoning | Zone 21 |
|--------|---------|

DATA IS DEEMED RELIABLE BUT IS NOT GUARANTEED ACCURATE BY THE REALTORS® ASSOCIATION OF EDMONTON. COPYRIGHT 2025 BY THE REALTORS® ASSOCIATION OF EDMONTON. ALL RIGHTS RESERVED.Trademarks are owned or controlled by the Canadian Real Estate Association (CREA) and identify real estate professionals who are members of CREA (REALTOR®, REALTORS®) and/or the quality of services they provide (MLS®, Multiple Listing Service®)

Listing information last updated on May 1st, 2025 at 4:02am MDT