

## **\$639,000 - 42230 Twp 632, Rural Bonnyville M.D.**

MLS® #E4426885

**\$639,000**

4 Bedroom, 3.00 Bathroom, 1,494 sqft

Rural on 1.81 Acres

Countryside Estates, Rural Bonnyville M.D.,  
AB

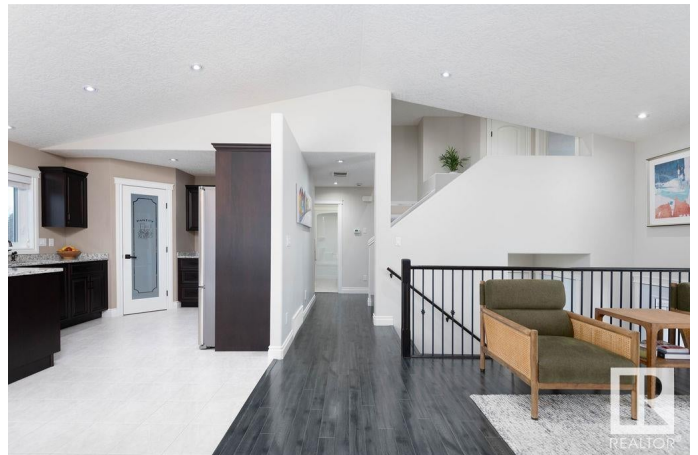
Discover the perfect blend of country living and modern convenience with this premier acreage, ideally located in Countryside Estates between Cold Lake North & South. With quick access to the Energy Centre, shopping, schools, the beach and outdoor recreation, this location is much sought after and offers both space & practicality. The spacious home features a facelift to the developed lower level with brand new vinyl plank flooring, a laundry closet and bar w/seating for entertaining. 9' ceilings make this garden view level seem bright & airy while the large windows throughout the vaulted ceiling home provide views of the surrounding beauty with plenty of natural light. The open concept Living/ Dining area allows for seamless flow to the upgraded kitchen with a gas stove, corner pantry and granite counters. Two large bedrooms complete the main level while your oversized primary suite with a 5 pc ensuite is on its own 3 rd level. Enjoying 1.81 acres of your own, there is plenty of space to play and relax

Built in 2013

### **Essential Information**

MLS® # E4426885

Price \$639,000



Bedrooms	4
Bathrooms	3.00
Full Baths	3
Square Footage	1,494
Acres	1.81
Year Built	2013
Type	Rural
Sub-Type	Detached Single Family
Style	Bi-Level
Status	Active

### **Community Information**

Address	42230 Twp 632
Area	Rural Bonnyville M.D.
Subdivision	Countryside Estates
City	Rural Bonnyville M.D.
County	ALBERTA
Province	AB
Postal Code	T9M 1P2

### **Amenities**

Features	Air Conditioner, Bar, Closet Organizers, Deck, Parking-Extra, R.V. Storage, Vaulted Ceiling, Vinyl Windows
----------	--

### **Interior**

Interior Features	ensuite bathroom
Heating	Forced Air-1, In Floor Heat System, Natural Gas, Water
Fireplace	Yes
Stories	3
Has Basement	Yes
Basement	Full, Finished

### **Exterior**

Exterior	Wood
Exterior Features	Flat Site, Low Maintenance Landscape, Schools, Shopping Nearby
Construction	Wood
Foundation	Concrete Perimeter

### **Additional Information**

Date Listed March 21st, 2025

Days on Market 44

Zoning Zone 60

DATA IS DEEMED RELIABLE BUT IS NOT GUARANTEED ACCURATE BY THE REALTORS® ASSOCIATION OF EDMONTON. COPYRIGHT 2025 BY THE REALTORS® ASSOCIATION OF EDMONTON. ALL RIGHTS RESERVED. Trademarks are owned or controlled by the Canadian Real Estate Association (CREA) and identify real estate professionals who are members of CREA (REALTOR®, REALTORS®) and/or the quality of services they provide (MLS®, Multiple Listing Service®)

Listing information last updated on May 4th, 2025 at 6:02am MDT