

\$999,707 - 21251 Twp Road 524, Rural Strathcona County

MLS® #E4426643

\$999,707

6 Bedroom, 4.50 Bathroom, 2,904 sqft

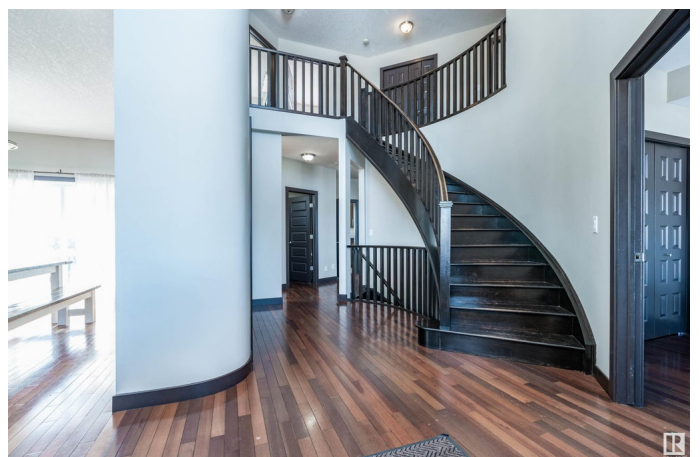
Rural on 19.89 Acres

None, Rural Strathcona County, AB

IMPRESSIVE 2 STOREY HOME SITUATED ON 19.89 ACRES!!! Only 15 minutes to Sherwood Park and 30 minutes to downtown Edmonton! This incredible home offers 2900 square feet, 6 BEDROOMS, MUNICIPAL WATER and a HEATED 38X40 SHOP!! Cement garage pad too! Super floor plan and perfect for the large or growing family. Featuring soaring ceilings, large living room with fireplace, huge dining area and a GORGEOUS DREAM KITCHEN!! Tons of room for entertaining your family & friends! Large family room with second gas fireplace, laundry room and mud room plus bathroom complete the main floor. Upstairs are 4 bedrooms & 4 piece bathroom. Gorgeous 5 piece "SPA-LIKE" ensuite in the Primary Bedroom, walk-in closet plus a private deck! Amazing front deck and a SOUTH FACING deck too in big backyard! Partially finished basement with 2 bedrooms, 4 piece bathroom, kitchenette, family room area & lots of storage space! NEWER SEPTIC & MOUND (2017) and NEWER FURNACE (2017). INCREDIBLE VALUE!!! Visit REALTOR® website for more information.

Built in 2007

Essential Information



MLS® #	E4426643
Price	\$999,707
Bedrooms	6
Bathrooms	4.50
Full Baths	4
Half Baths	1
Square Footage	2,904
Acres	19.89
Year Built	2007
Type	Rural
Sub-Type	Detached Single Family
Style	2 Storey
Status	Active

Community Information

Address	21251 Twp Road 524
Area	Rural Strathcona County
Subdivision	None
City	Rural Strathcona County
County	ALBERTA
Province	AB
Postal Code	T8G 2E9

Amenities

Features	Deck
----------	------

Interior

Interior Features	ensuite bathroom
Heating	Forced Air-1, In Floor Heat System, Natural Gas
Fireplace	Yes
Stories	2
Has Basement	Yes
Basement	Full, Partially Finished

Exterior

Exterior	Wood
Exterior Features	Flat Site, Low Maintenance Landscape
Construction	Wood
Foundation	Concrete Perimeter

Additional Information

Date Listed	March 20th, 2025
Days on Market	41
Zoning	Zone 60

DATA IS DEEMED RELIABLE BUT IS NOT GUARANTEED ACCURATE BY THE REALTORS® ASSOCIATION OF EDMONTON. COPYRIGHT 2025 BY THE REALTORS® ASSOCIATION OF EDMONTON. ALL RIGHTS RESERVED.Trademarks are owned or controlled by the Canadian Real Estate Association (CREA) and identify real estate professionals who are members of CREA (REALTOR®, REALTORS®) and/or the quality of services they provide (MLS®, Multiple Listing Service®)

Listing information last updated on April 30th, 2025 at 3:02pm MDT