

\$774,900 - 46511 Twp Rd 611, Rural Bonnyville M.D.

MLS® #E4425355

\$774,900

5 Bedroom, 3.50 Bathroom, 1,850 sqft

Rural on 1.06 Acres

Chateau Estates, Rural Bonnyville M.D., AB

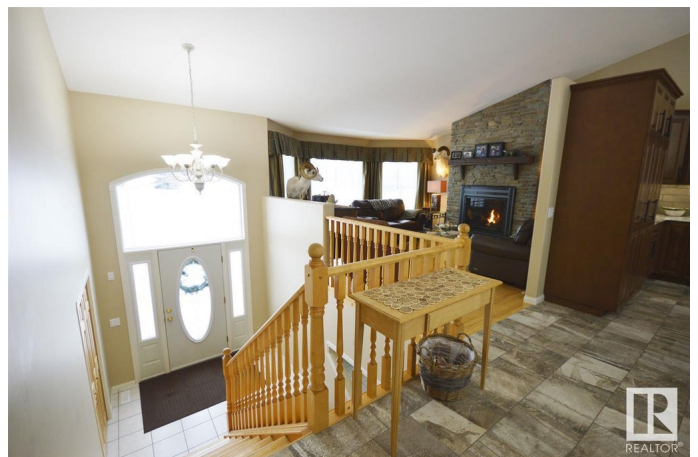
Live the 'Lake Life' in style w/ this elegant 1850 sq.ft. home. Located in the prestigious Chateau Estates sub. by Moose Lake. Custom built bi-level has been extensively renovated inside & out! Fall in love w/ large foyer & main living area w/ vaulted ceiling & hardwood/ceramic floors. Livingroom features a stone faced gas fireplace & bay window. Chef inspired kitchen w/ ample dark rich cabinets, pantry, quartz countertops, R/O & eat at island. Dining space has BI hutch w/ wine cooler & office has glass french doors & deck access. Sunroom offers a lake view from every angle & door leads onto the back multilevel deck. 5 bdrms + 4 baths including a luxurious master suite w/ walk in closet & 4 pc ensuite w/ huge corner jetted tub, stand up shower & heated floors. Fully developed walk up basement includes great sized rec room, bar, laundry & underslab heat. Nicely landscaped & fenced 1 acre lot w/ firepit, paved driveway & amazing lake views. Triple heated garage w/ bathroom & double detach. Vacation at Home!

Built in 2002

Essential Information

MLS® # E4425355

Price \$774,900



Bedrooms	5
Bathrooms	3.50
Full Baths	3
Half Baths	1
Square Footage	1,850
Acres	1.06
Year Built	2002
Type	Rural
Sub-Type	Detached Single Family
Style	Bi-Level
Status	Active

Community Information

Address	46511 Twp Rd 611
Area	Rural Bonnyville M.D.
Subdivision	Chateau Estates
City	Rural Bonnyville M.D.
County	ALBERTA
Province	AB
Postal Code	T9N 2J1

Amenities

Features	Air Conditioner, Ceiling 10 ft., Deck, Exterior Walls- 2"x6", Fire Pit, Hot Water Instant, Hot Water Natural Gas, Hot Water Tankless, Sunroom, Vaulted Ceiling, Vinyl Windows, Walk-up Basement
----------	---

Interior

Interior Features	ensuite bathroom
Heating	Forced Air-1, In Floor Heat System, Natural Gas
Fireplace	Yes
Stories	2
Has Basement	Yes
Basement	Full, Finished

Exterior

Exterior	Wood
Exterior Features	Backs Onto Lake, Boating, Fenced, Lake View, Landscaped, Waterfront Property
Construction	Wood

Foundation Concrete Perimeter

Additional Information

Date Listed March 10th, 2025

Days on Market 52

Zoning Zone 65

DATA IS DEEMED RELIABLE BUT IS NOT GUARANTEED ACCURATE BY THE REALTORS® ASSOCIATION OF EDMONTON. COPYRIGHT 2025 BY THE REALTORS® ASSOCIATION OF EDMONTON. ALL RIGHTS RESERVED.Trademarks are owned or controlled by the Canadian Real Estate Association (CREA) and identify real estate professionals who are members of CREA (REALTOR®, REALTORS®) and/or the quality of services they provide (MLS®, Multiple Listing Service®)

Listing information last updated on May 1st, 2025 at 4:17pm MDT