

## \$485,000 - 265 Terra Nova Crescent, Cold Lake

MLS® #E4425050

**\$485,000**

5 Bedroom, 3.00 Bathroom, 1,525 sqft

Single Family on 0.00 Acres

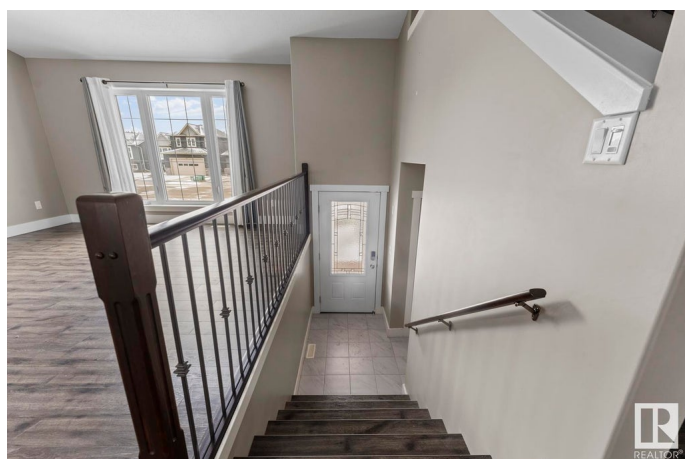
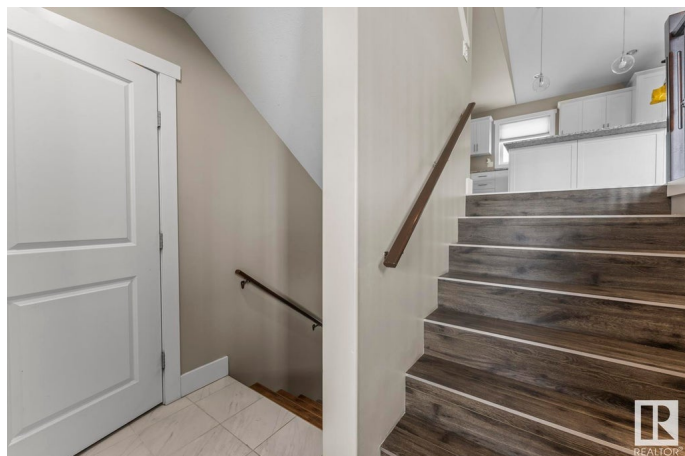
Parkview Estates (Cold Lake), Cold Lake, AB

This fantastic family home in Cold Lake North is just a short walk from Kinosoo Beach and the MD Campground! The main floor features vaulted ceilings in the living room and an open-concept layout, perfect for entertaining. The kitchen offers a large center island, Quartz countertops, and stainless steel appliances. Two spacious bedrooms are located on the main floor, while the private primary suite, located just up a short flight of stairs, includes a 4-piece ensuite with in-floor heating. The fully finished basement is heated by in-floor heat and boasts a large family room, two additional bedrooms, and a full bathroom. The yard is fully fenced, beautifully landscaped, and close to a walking trail, with a large deck and shed for extra storage. Additional features include in-floor heating throughout, a heated garage, an upgraded T-bar drop ceiling, and custom blinds. This home offers comfort, convenience, and the perfect location for family living!

Built in 2017

### Essential Information

MLS® #	E4425050
Price	\$485,000
Bedrooms	5
Bathrooms	3.00



Full Baths	3
Square Footage	1,525
Acres	0.00
Year Built	2017
Type	Single Family
Sub-Type	Detached Single Family
Style	Bi-Level
Status	Active

### **Community Information**

Address	265 Terra Nova Crescent
Area	Cold Lake
Subdivision	Parkview Estates (Cold Lake)
City	Cold Lake
County	ALBERTA
Province	AB
Postal Code	T9M 0L5

### **Amenities**

Amenities	No Animal Home, No Smoking Home, Vaulted Ceiling, Vinyl Windows, See Remarks
Parking	Double Garage Attached, Heated

### **Interior**

Interior Features	ensuite bathroom
Appliances	Dishwasher-Built-In, Dryer, Garage Control, Garage Opener, Hood Fan, Refrigerator, Storage Shed, Stove-Electric, Washer, Window Coverings, Garage Heater
Heating	Forced Air-1, In Floor Heat System, Natural Gas
Stories	3
Has Basement	Yes
Basement	Full, Finished

### **Exterior**

Exterior	Wood, Vinyl
Exterior Features	Fenced, Landscaped, Level Land, Playground Nearby, Treed Lot
Roof	Asphalt Shingles
Construction	Wood, Vinyl
Foundation	Concrete Perimeter

**School Information**

Elementary	Cold Lake Elementary
Middle	Nelson Heights School
High	Cold Lake High School

**Additional Information**

Date Listed	March 11th, 2025
Days on Market	52
Zoning	Zone 60

DATA IS DEEMED RELIABLE BUT IS NOT GUARANTEED ACCURATE BY THE REALTORS® ASSOCIATION OF EDMONTON. COPYRIGHT 2025 BY THE REALTORS® ASSOCIATION OF EDMONTON. ALL RIGHTS RESERVED.Trademarks are owned or controlled by the Canadian Real Estate Association (CREA) and identify real estate professionals who are members of CREA (REALTOR®, REALTORS®) and/or the quality of services they provide (MLS®, Multiple Listing Service®)

Listing information last updated on May 2nd, 2025 at 9:32am MDT