

\$545,000 - 167 Caledon Crescent, Spruce Grove

MLS® #E4423103

\$545,000

3 Bedroom, 2.50 Bathroom, 1,867 sqft
Single Family on 0.00 Acres

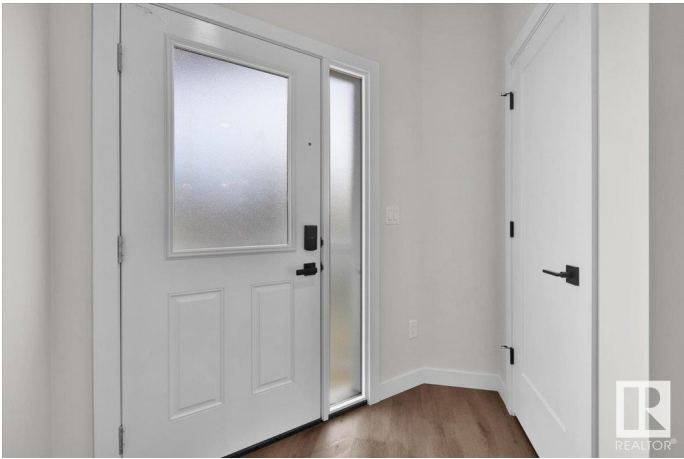
Copperhaven, Spruce Grove, AB

This stunning 2-storey home, is located in the desirable Copperhaven community in Spruce Grove. The main level features an open-concept design with a spacious kitchen, dining, and living area, complete with an electric fireplace in the living room. The kitchen boasts a large island with a breakfast bar, a pantry, and modern finishes. Upstairs, you'll find a versatile bonus room, a laundry room, a 4-piece bath, and two generously sized bedrooms. The primary suite includes a walk-in closet and a luxurious 5-piece ensuite with side-by-side sinks, a soaker tub, and a stand-up shower. This home also offers a separate side entrance to the unfinished basement and main level. This home is situated near schools, parks, playgrounds, and all essential amenities and is perfect for growing families. *Photos are representative*

Built in 2025

Essential Information

MLS® #	E4423103
Price	\$545,000
Bedrooms	3
Bathrooms	2.50
Full Baths	2
Half Baths	1
Square Footage	1,867



Acres	0.00
Year Built	2025
Type	Single Family
Sub-Type	Detached Single Family
Style	2 Storey
Status	Active

Community Information

Address	167 Caledon Crescent
Area	Spruce Grove
Subdivision	Copperhaven
City	Spruce Grove
County	ALBERTA
Province	AB
Postal Code	T7X 0Y8

Amenities

Amenities	Ceiling 9 ft., Closet Organizers, Detectors Smoke, No Animal Home, No Smoking Home, Smart/Program. Thermostat, Vinyl Windows
Parking	Double Garage Attached

Interior

Interior Features	ensuite bathroom
Appliances	Dishwasher-Built-In, Microwave Hood Fan, Refrigerator, Stove-Electric
Heating	Forced Air-1, Natural Gas
Fireplace	Yes
Fireplaces	Insert
Stories	2
Has Basement	Yes
Basement	Full, Unfinished

Exterior

Exterior	Wood, Vinyl
Exterior Features	Park/Reserve, Playground Nearby, Schools, Shopping Nearby
Roof	Asphalt Shingles
Construction	Wood, Vinyl
Foundation	Concrete Perimeter

Additional Information

Date Listed February 26th, 2025

Days on Market 120

Zoning Zone 91

DATA IS DEEMED RELIABLE BUT IS NOT GUARANTEED ACCURATE BY THE REALTORS® ASSOCIATION OF EDMONTON. COPYRIGHT 2025 BY THE REALTORS® ASSOCIATION OF EDMONTON. ALL RIGHTS RESERVED. Trademarks are owned or controlled by the Canadian Real Estate Association (CREA) and identify real estate professionals who are members of CREA (REALTOR®, REALTORS®) and/or the quality of services they provide (MLS®, Multiple Listing Service®)

Listing information last updated on June 26th, 2025 at 1:17am MDT