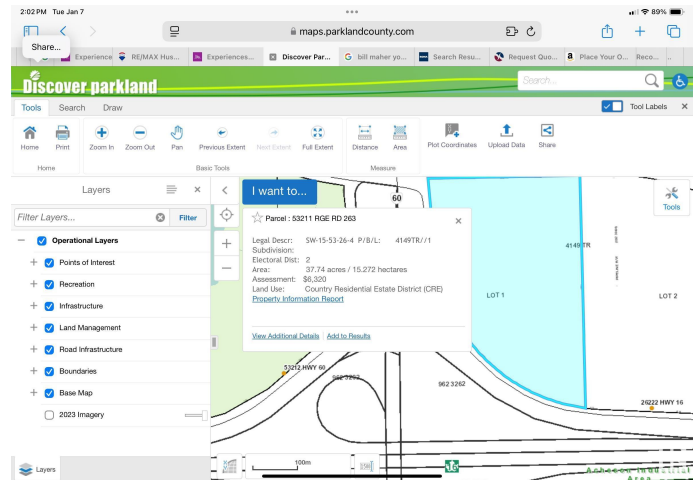


**\$15,000,000**

Acheson Business Park, Rural Parkland  
County, AB

40 acres Highway Commercial for Sale. Seller may finance up to 75% of gross sale price to qualified buyer there is income from leasing the land



## Essential Information


MLS® #	E4417639
Price	\$15,000,000
Bathrooms	0.00
Acres	0.00
Type	Land Commercial
Status	Active

## Community Information


Address	53211 Rr263
Area	Rural Parkland County
Subdivision	Acheson Business Park
City	Rural Parkland County
County	ALBERTA
Province	AB
Postal Code	T7Z 1R1

## Additional Information

Date Listed	January 8th, 2025
Days on Market	227
Zoning	Zone 70



# Discover parkland



## Property/Land Information

### Location Details

MUNICIPAL ADDRESS: 53211 RGE RD 263

LEGAL ADDRESS: SW-15-53-26-4

LOT: 1

BLOCK:

PLAN: 4149TR

SUBDIVISION:

Zoning: Country Residential Estate District

### Property/Land Details

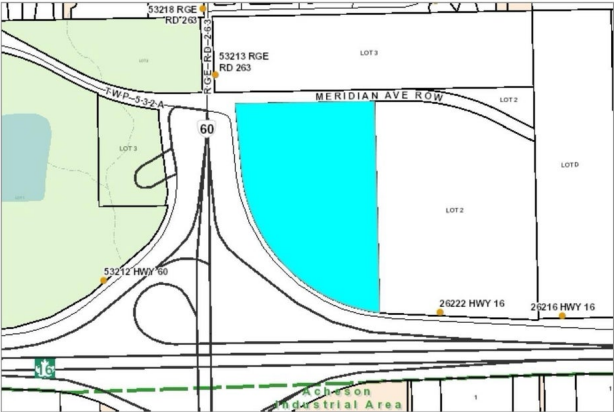
ACRES: 37.74

HECTARES: 15.272

ASSESSMENT: \$6,320

ASSESSMENT YEAR: 2023

ELECTORAL DIVISION: 2



The map displays a property layout with several lots. A large cyan-colored lot is centrally located, bordered by Meridian Ave to the north and HWY 60 to the west. To the east of this lot are two smaller lots, LOT2 and LOT3. Further east, along HWY 16, are two more lots, 26222 HWY 16 and 26216 HWY 16. The map also shows surrounding areas including a green-shaded 'Residential Area' and a grey-shaded 'Industrial Area'. Roads shown include HWY 60, HWY 16, and Meridian Ave. A north arrow is present in the top left corner of the map area.

While a great deal of effort has been made by Parkland County to ensure that our digital data is of the highest quality, it is of course possible that there are errors, omissions or inconsistencies. The data is continually being updated and enhanced. If a problem with the data is found, please help us correct the matter by sending a "Problem Report" to [gissupport@parklandcounty.com](mailto:gissupport@parklandcounty.com)

Report generated on: 11-03-2023

by Parkland County

DATA IS DEEMED RELIABLE BUT IS NOT GUARANTEED ACCURATE BY THE REALTORS® ASSOCIATION OF EDMONTON. COPYRIGHT 2025 BY THE REALTORS® ASSOCIATION OF EDMONTON. ALL RIGHTS RESERVED. Trademarks are owned or controlled by the Canadian Real Estate Association (CREA) and identify real estate professionals who are members of CREA (REALTOR®, REALTORS®) and/or the quality of services they provide (MLS®, Multiple Listing Service®)

Listing information last updated on August 23rd, 2025 at 4:17pm MDT