

## \$429,900 - 5810 Meadow Way, Cold Lake

MLS® #E4415629

**\$429,900**

5 Bedroom, 3.00 Bathroom, 1,531 sqft

Single Family on 0.00 Acres

None, Cold Lake, AB

Haley style bi-level in The Meadows with hardwood floors, ceramic tile, large great room, vaulted ceilings, pot lights throughout, master is large with 4 pc ensuite and walk-in closet, under-slab heat in walkout basement with 2nd kitchen. Overhead heated garage, concrete driveway, back deck 18x12, front deck 24x7, & back yard circular firepit with concrete sitting area are just a few of the many upgrades.

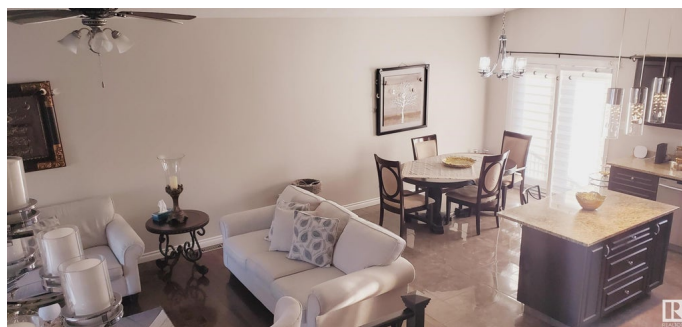
Built in 2012

### Essential Information

|                |                        |
|----------------|------------------------|
| MLS® #         | E4415629               |
| Price          | \$429,900              |
| Bedrooms       | 5                      |
| Bathrooms      | 3.00                   |
| Full Baths     | 3                      |
| Square Footage | 1,531                  |
| Acres          | 0.00                   |
| Year Built     | 2012                   |
| Type           | Single Family          |
| Sub-Type       | Detached Single Family |
| Style          | Bi-Level               |
| Status         | Active                 |

### Community Information

Address 5810 Meadow Way



|             |           |
|-------------|-----------|
| Area        | Cold Lake |
| Subdivision | None      |
| City        | Cold Lake |
| County      | ALBERTA   |
| Province    | AB        |
| Postal Code | T9M 0C2   |

### Amenities

|           |                        |
|-----------|------------------------|
| Amenities | Deck                   |
| Parking   | Double Garage Attached |

### Interior

|                   |  |
|-------------------|--|
| Interior Features | ensuite bathroom   |
| Appliances        | Dishwasher-Built-In, Dryer, Refrigerator, Stove-Electric, Washer |
| Heating           | Forced Air-1, Natural Gas  |
| Stories           | 3  |
| Has Basement      | Yes  |
| Basement          | Full, Finished   |

### Exterior

|                   |   |
|-------------------|---|
| Exterior          | Wood, Vinyl                               |
| Exterior Features | Backs Onto Park/Trees, Fenced, Landscaped |
| Roof              | Asphalt Shingles                          |
| Construction      | Wood, Vinyl                               |
| Foundation        | Concrete Perimeter                        |

### Additional Information

|                |                    |
|----------------|--------------------|
| Date Listed    | December 7th, 2024 |
| Days on Market | 226                |
| Zoning         | Zone 60            |

DATA IS DEEMED RELIABLE BUT IS NOT GUARANTEED ACCURATE BY THE REALTORS® ASSOCIATION OF EDMONTON. COPYRIGHT 2025 BY THE REALTORS® ASSOCIATION OF EDMONTON. ALL RIGHTS RESERVED. Trademarks are owned or controlled by the Canadian Real Estate Association (CREA) and identify real estate professionals who are members of CREA (REALTOR®, REALTORS®) and/or the quality of services they provide (MLS®, Multiple Listing Service®)

Listing information last updated on July 21st, 2025 at 3:32am MDT