

\$384,900 - Highway 28 Twp Rd 611, Rural Bonnyville M.D.

MLS® #E4415192

\$384,900

0 Bedroom, 0.00 Bathroom,
Rural on 7.02 Acres

None, Rural Bonnyville M.D., AB

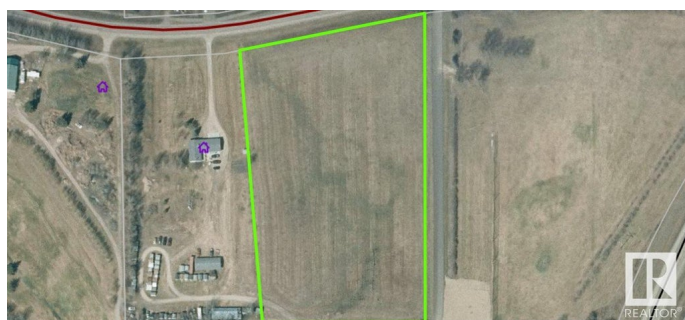
Tee off on this potential! 7 acres of prime development property, bordering the Bonnyville Golf and Country Club, with spectacular views of Moose Lake and walking distance to the shoreline, beaches, and playground. Only a 5 minute drive to the town of Bonnyville, and easy access to Highway 28. Whether you're planning a large condo project, a small community, a townhome complex, or just a private acreage- swing for the green and the possibilities are endless!

Essential Information

MLS® #	E4415192
Price	\$384,900
Bathrooms	0.00
Acres	7.02
Type	Rural
Sub-Type	Vacant Lot/Land
Status	Active

Community Information

Address	Highway 28 Twp Rd 611
Area	Rural Bonnyville M.D.
Subdivision	None
City	Rural Bonnyville M.D.



County	ALBERTA
Province	AB
Postal Code	T9N 2G9

Exterior

Exterior Features Golf Nearby, Lake View

Additional Information

Date Listed	December 3rd, 2024
Days on Market	245
Zoning	Zone 60

DATA IS DEEMED RELIABLE BUT IS NOT GUARANTEED ACCURATE BY THE REALTORS® ASSOCIATION OF EDMONTON. COPYRIGHT 2025 BY THE REALTORS® ASSOCIATION OF EDMONTON. ALL RIGHTS RESERVED. Trademarks are owned or controlled by the Canadian Real Estate Association (CREA) and identify real estate professionals who are members of CREA (REALTOR®, REALTORS®) and/or the quality of services they provide (MLS®, Multiple Listing Service®)

Listing information last updated on August 5th, 2025 at 4:03pm MDT