

\$89,500 - Highway 15 Rrd 185, Rural Lamont County

MLS® #E4413435

\$89,500

0 Bedroom, 0.00 Bathroom,
Rural on 24.02 Acres

None, Rural Lamont County, AB

24.02 Acres Located along the SOUTH Side of Highway 15 just 1/2 Mile East of the Village of Chipman. Great Location to build your Dream home or Home Based Business with Highway frontage. Truckers Dream Location with easy access to Highway 15. Current land mainly in Crop .

Essential Information

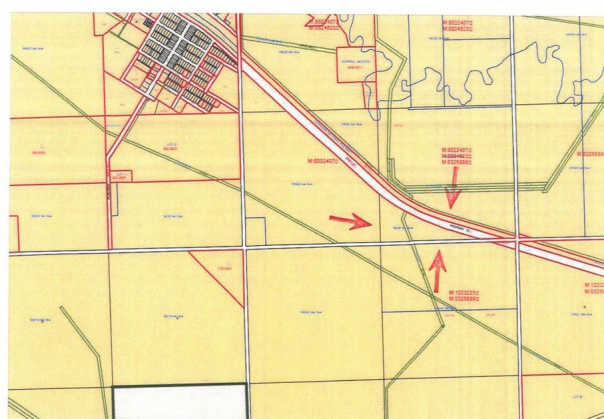
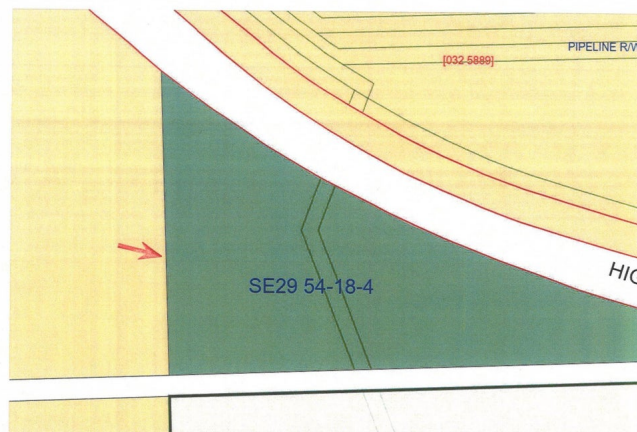
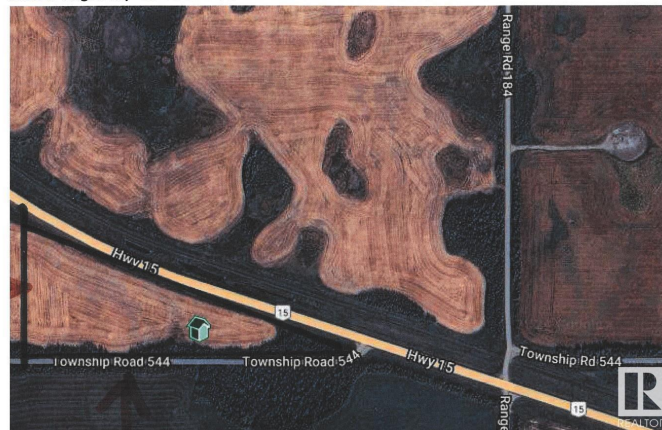
MLS® #	E4413435
Price	\$89,500
Bathrooms	0.00
Acres	24.02
Type	Rural
Sub-Type	Vacant Lot/Land
Status	Active

Community Information

Address	Highway 15 Rrd 185
Area	Rural Lamont County
Subdivision	None
City	Rural Lamont County
County	ALBERTA
Province	AB
Postal Code	T0B 0W0

Exterior

Address: Highway 15 RRD 185



Exterior Features See Remarks

Additional Information

Date Listed November 9th, 2024

Days on Market 220

Zoning Zone 60

DATA IS DEEMED RELIABLE BUT IS NOT GUARANTEED ACCURATE BY THE REALTORS® ASSOCIATION OF EDMONTON. COPYRIGHT 2025 BY THE REALTORS® ASSOCIATION OF EDMONTON. ALL RIGHTS RESERVED.Trademarks are owned or controlled by the Canadian Real Estate Association (CREA) and identify real estate professionals who are members of CREA (REALTOR®, REALTORS®) and/or the quality of services they provide (MLS®, Multiple Listing Service®)

Listing information last updated on June 17th, 2025 at 9:17am MDT