

## \$89,500 - Hwy 15 Rrd 185, Rural Lamont County

MLS® #E4413434

**\$89,500**

0 Bedroom, 0.00 Bathroom,  
Rural on 21.00 Acres

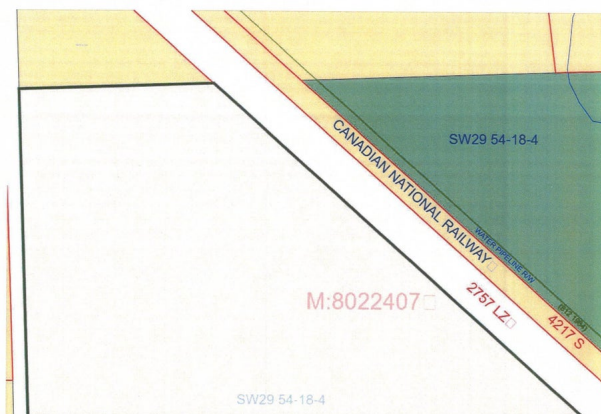
None, Rural Lamont County, AB

21 Acres with Highway and potential access to City Water. Property located 1/4 mile East of the Village of Chipman along Highway 15. Combination of crop & Treed areas property even has a creek on the north boundary of this acreage. Build your dream home or expand grazing land for your herd.



### Essential Information

MLS® #	E4413434
Price	\$89,500
Bathrooms	0.00
Acres	21.00
Type	Rural
Sub-Type	Vacant Lot/Land
Status	Active



### Community Information

Address	Hwy 15 Rrd 185
Area	Rural Lamont County
Subdivision	None
City	Rural Lamont County
County	ALBERTA
Province	AB
Postal Code	T0B 0W0

### Exterior



Exterior Features   Private Setting

**Additional Information**

Date Listed                November 9th, 2024

Days on Market        202

Zoning                    Zone 60

DATA IS DEEMED RELIABLE BUT IS NOT GUARANTEED ACCURATE BY THE REALTORS® ASSOCIATION OF EDMONTON. COPYRIGHT 2025 BY THE REALTORS® ASSOCIATION OF EDMONTON. ALL RIGHTS RESERVED.Trademarks are owned or controlled by the Canadian Real Estate Association (CREA) and identify real estate professionals who are members of CREA (REALTOR®, REALTORS®) and/or the quality of services they provide (MLS®, Multiple Listing Service®)

Listing information last updated on May 30th, 2025 at 4:33pm MDT