

## \$1,450,000 - N/A, Rural Parkland County

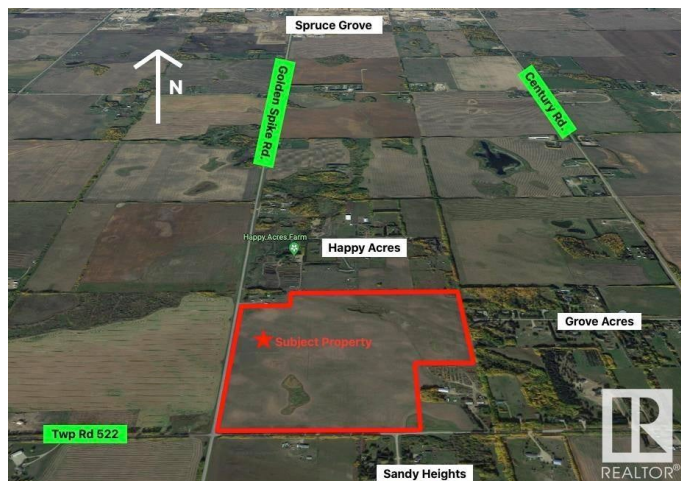
MLS® #E4410119

**\$1,450,000**

0 Bedroom, 0.00 Bathroom,  
Rural on 126.94 Acres

None, Rural Parkland County, AB

This 126.94 +/- acre property is located along Golden Spike Road (Range Road 273) and Township Road 522 (northeast corner of intersection) just South of Spruce Grove city limits. Access to property is paved road with easy access to Highways 16, 16A and 627. Just 5 minutes to Spruce Grove and 10 minutes to Stony Plain. This land is generally flat, with some low lying areas and currently being grain farmed. Power and gas lines are accessible at the property line. Future multi-parcel subdivision possibilities (rezoning would be required) or potential for subdivision of one additional lot under current zoning. Zoned Agricultural General District.



### Essential Information

MLS® #	E4410119
Price	\$1,450,000
Bathrooms	0.00
Acres	126.94
Type	Rural
Sub-Type	Vacant Lot/Land
Status	Active

### Community Information

Address	N/A
Area	Rural Parkland County

Subdivision	None
City	Rural Parkland County
County	ALBERTA
Province	AB
Postal Code	T7Y 2V7

**Exterior**

Exterior Features    See Remarks

**Additional Information**

Date Listed	October 11th, 2024
Days on Market	306
Zoning	Zone 90

DATA IS DEEMED RELIABLE BUT IS NOT GUARANTEED ACCURATE BY THE REALTORS® ASSOCIATION OF EDMONTON. COPYRIGHT 2025 BY THE REALTORS® ASSOCIATION OF EDMONTON. ALL RIGHTS RESERVED.Trademarks are owned or controlled by the Canadian Real Estate Association (CREA) and identify real estate professionals who are members of CREA (REALTOR®, REALTORS®) and/or the quality of services they provide (MLS®, Multiple Listing Service®)

Listing information last updated on August 13th, 2025 at 4:02am MDT