

Courtesy Of Brenda L Haney Of Panache Realty Ltd.

\$64,900 - 110 61029 Rge Rd 465, Rural Bonnyville M.D.

MLS® #E4407825

\$64,900

0 Bedroom, 0.00 Bathroom,
Rural on 0.42 Acres

Model Development, Rural Bonnyville M.D.,
AB

On your mark, get set, dig! Here is your opportunity to own an affordable lot within a short walk to the shores of Moose Lake and all the family fun that it promises. This half acre lot is the perfect place to build your cabin or dream home. Cleared and ready to go! Power and gas are at the road.

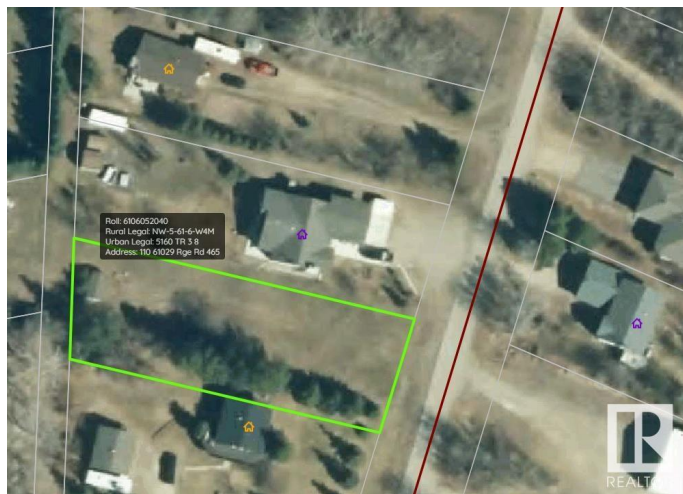
Essential Information

MLS® #	E4407825
Price	\$64,900
Bathrooms	0.00
Acres	0.42
Type	Rural
Sub-Type	Vacant Lot/Land
Status	Active

Community Information

Address	110 61029 Rge Rd 465
Area	Rural Bonnyville M.D.
Subdivision	Model Development
City	Rural Bonnyville M.D.
County	ALBERTA
Province	AB
Postal Code	T9N 2J1

Exterior



Exterior Features Beach Access, Boating, Flat Site, Fruit Trees/Shrubs, Lake Access
Property, Lake View, Recreation Use

Additional Information

Date Listed September 24th, 2024

Days on Market 326

Zoning Zone 65

DATA IS DEEMED RELIABLE BUT IS NOT GUARANTEED ACCURATE BY THE REALTORS® ASSOCIATION OF EDMONTON. COPYRIGHT 2025 BY THE REALTORS® ASSOCIATION OF EDMONTON. ALL RIGHTS RESERVED. Trademarks are owned or controlled by the Canadian Real Estate Association (CREA) and identify real estate professionals who are members of CREA (REALTOR®, REALTORS®) and/or the quality of services they provide (MLS®, Multiple Listing Service®)

Listing information last updated on August 16th, 2025 at 2:02pm MDT