

\$1,479,900 - 10720-57 Ave, Edmonton

MLS® #E4400943

\$1,479,900

3 Bedroom, 2.50 Bathroom, 2,605 sqft
Single Family on 0.00 Acres

Pleasantview (Edmonton), Edmonton, AB

Located in a quiet tree-lined street in the heart of Pleasantview, minutes from the UofA, Southgate Mall and the LRT station. Next door is a park with skating rink, tennis court and basketball courts, playground and more. Step into this architect-designed, engineer-built 2-storey with double attached garage masterpiece, where meticulous craftsmanship meets unrivaled sophistication. This expansive 2,600 sq. ft. retreat boasts a spacious mudroom, gourmet kitchen, and versatile layout, promising both elegance and functionality for modern living. With a vast 37.5 ft. by 145 ft. lot and sheer luxury and elegance throughout, welcome to a realm of opulence and refinement unlike any other. Since this house is not built yet, new owners will be able to customize it to their likings such as colors, finishing, and adjustments to the floor plan.



Built in 2024

Essential Information

| | |
|----------------|-------------|
| MLS® # | E4400943 |
| Price | \$1,479,900 |
| Bedrooms | 3 |
| Bathrooms | 2.50 |
| Full Baths | 2 |
| Half Baths | 1 |
| Square Footage | 2,605 |

| | |
|------------|------------------------|
| Acres | 0.00 |
| Year Built | 2024 |
| Type | Single Family |
| Sub-Type | Detached Single Family |
| Style | 2 Storey |
| Status | Active |

Community Information

| | |
|-------------|-------------------------|
| Address | 10720-57 Ave |
| Area | Edmonton |
| Subdivision | Pleasantview (Edmonton) |
| City | Edmonton |
| County | ALBERTA |
| Province | AB |
| Postal Code | T6H 0Y6 |

Amenities

| | |
|-----------|------------------------|
| Amenities | Ceiling 9 ft. |
| Parking | Double Garage Attached |

Interior

| | |
|-------------------|---------------------------|
| Interior Features | ensuite bathroom |
| Appliances | See Remarks |
| Heating | Forced Air-1, Natural Gas |
| Stories | 2 |
| Has Basement | Yes |
| Basement | Full, See Remarks |

Exterior

| | |
|-------------------|-----------------------------------------------------------------------------------------------|
| Exterior | Wood, Stone, Stucco |
| Exterior Features | Airport Nearby, Flat Site, Playground Nearby, Public Transportation, Schools, Shopping Nearby |
| Roof | Asphalt Shingles |
| Construction | Wood, Stone, Stucco |
| Foundation | Concrete Perimeter |

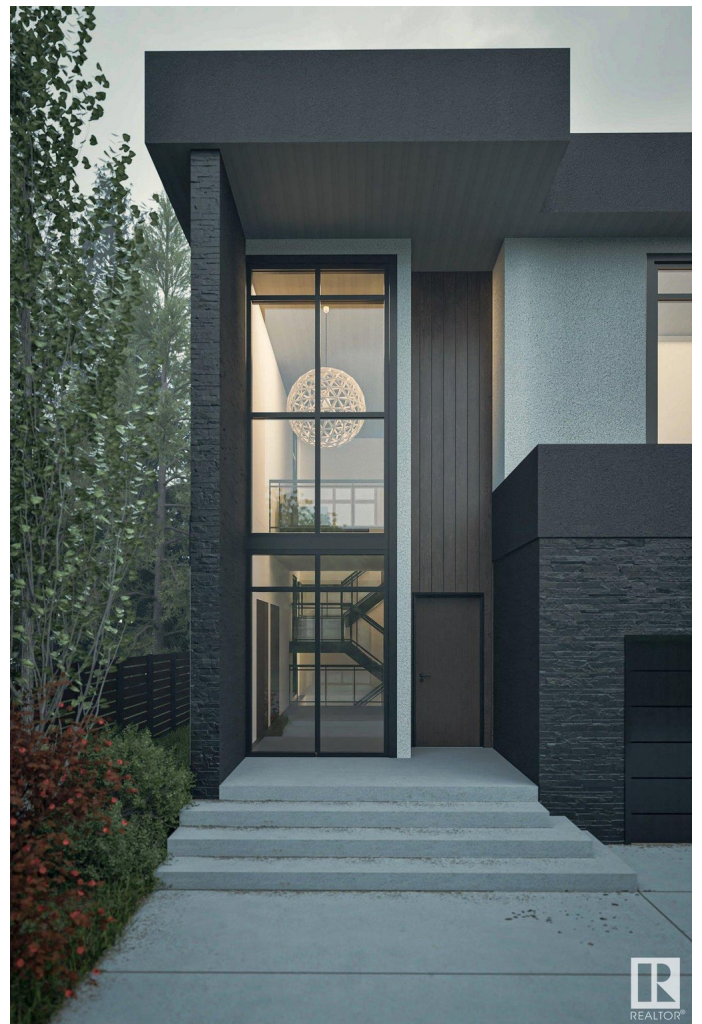
Additional Information

| | |
|----------------|------------------|
| Date Listed | August 7th, 2024 |
| Days on Market | 365 |



Zoning

Zone 15



DATA IS DEEMED RELIABLE BUT IS NOT GUARANTEED ACCURATE BY THE REALTORS® ASSOCIATION OF EDMONTON. COPYRIGHT 2025 BY THE REALTORS® ASSOCIATION OF EDMONTON. ALL RIGHTS RESERVED. Trademarks are owned or controlled by the Canadian Real Estate Association (CREA) and identify real estate professionals who are members of CREA (REALTOR®, REALTORS®) and/or the quality of services they provide (MLS®, Multiple Listing Service®)

Listing information last updated on August 7th, 2025 at 6:02am MDT