

\$66,900 - 203 59536 Range Rd 132a, Rural Smoky Lake County

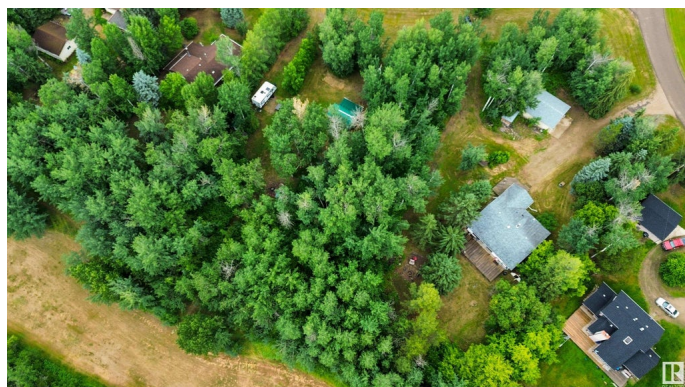
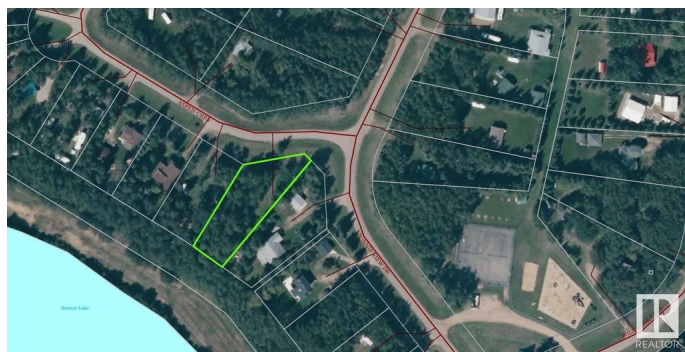
MLS® #E4397643

\$66,900

0 Bedroom, 0.00 Bathroom,
Rural on 0.68 Acres

Bonnie Lake Resort, Rural Smoky Lake
County, AB

Welcome to Bonnie Lake Resort, where endless possibilities await on this 0.68 acre treed lot, perfect for creating your own private getaway. This spacious lot offers ample room for parking your RV or constructing your dream lake cottage. Enjoy the convenience of being within walking distance to a playground, tennis, and basketball courts. For the outdoor enthusiasts, Vilna Golf Course, quad trails, and a boat launch are just a stone's throw away. Located just a short drive from Smoky Lake to the west, St. Paul to the east, and Edmonton only 1 hour and 48 minutes away, this property offers the perfect blend of tranquility and accessibility for your recreational needs.



Essential Information

| | |
|-----------|-----------------|
| MLS® # | E4397643 |
| Price | \$66,900 |
| Bathrooms | 0.00 |
| Acres | 0.68 |
| Type | Rural |
| Sub-Type | Vacant Lot/Land |
| Status | Active |

Community Information

| | |
|-------------|-------------------------|
| Address | 203 59536 Range Rd 132a |
| Area | Rural Smoky Lake County |
| Subdivision | Bonnie Lake Resort |
| City | Rural Smoky Lake County |
| County | ALBERTA |
| Province | AB |
| Postal Code | T0A 3L0 |

Exterior

| | |
|-------------------|---|
| Exterior Features | Backs Onto Park/Trees, Beach Access, Boating, Golf Nearby, Lake Access Property, Paved Lane, Picnic Area, Playground Nearby, Private Setting, Recreation Use, Treed Lot |
|-------------------|---|

Additional Information

| | |
|----------------|-----------------|
| Date Listed | July 15th, 2024 |
| Days on Market | 396 |
| Zoning | Zone 60 |

DATA IS DEEMED RELIABLE BUT IS NOT GUARANTEED ACCURATE BY THE REALTORS® ASSOCIATION OF EDMONTON. COPYRIGHT 2025 BY THE REALTORS® ASSOCIATION OF EDMONTON. ALL RIGHTS RESERVED. Trademarks are owned or controlled by the Canadian Real Estate Association (CREA) and identify real estate professionals who are members of CREA (REALTOR®, REALTORS®) and/or the quality of services they provide (MLS®, Multiple Listing Service®)

Listing information last updated on August 15th, 2025 at 4:02pm MDT