

## \$49,500 - Nw 23-56-9 W 4th, Rural St. Paul County

MLS® #E4374393

**\$49,500**

0 Bedroom, 0.00 Bathroom,  
Rural on 9.05 Acres

None, Rural St. Paul County, AB

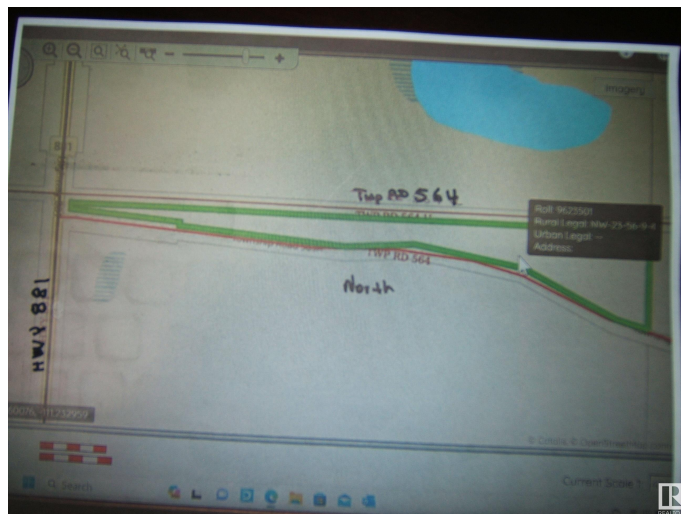
9.05 Acres of Land Located on the Northeast Corner of Secondary Highway 881 and TWP RD 564. Property is Pretty Well Covered with Trees Except for a Low Wet Area. Property is Narrow at the Corner of SEC HWY 881 but Widens out as You Travel East on TWP RD 564. This Would be a Perfect Spot to Build a Home or as a Camping Spot for Quiet Weekends Getaways. Great Location' as Less then 20 Minutes to the Town of St. Paul or Myrnam and Only a Short Drive to Lac Bellevue. Invest Today!

### Essential Information

MLS® #	E4374393
Price	\$49,500
Bathrooms	0.00
Acres	9.05
Type	Rural
Sub-Type	Vacant Lot/Land
Status	Active

### Community Information

Address	Nw 23-56-9 W 4th
Area	Rural St. Paul County
Subdivision	None
City	Rural St. Paul County
County	ALBERTA



Province AB  
Postal Code T0A 1A0

Exterior

Exterior Features Private Setting, Treed Lot

Additional Information

Date Listed February 25th, 2024  
Days on Market 562  
Zoning Zone 60

DATA IS DEEMED RELIABLE BUT IS NOT GUARANTEED ACCURATE BY THE REALTORS® ASSOCIATION OF EDMONTON. COPYRIGHT 2025 BY THE REALTORS® ASSOCIATION OF EDMONTON. ALL RIGHTS RESERVED.Trademarks are owned or controlled by the Canadian Real Estate Association (CREA) and identify real estate professionals who are members of CREA (REALTOR®, REALTORS®) and/or the quality of services they provide (MLS®, Multiple Listing Service®)  
Listing information last updated on September 9th, 2025 at 2:32am MDT