

\$285,000 - 49 65275 Rr 114a, Rural Lac La Biche County

MLS® #E4367616

\$285,000

3 Bedroom, 2.50 Bathroom, 1,778 sqft

Rural on 0.10 Acres

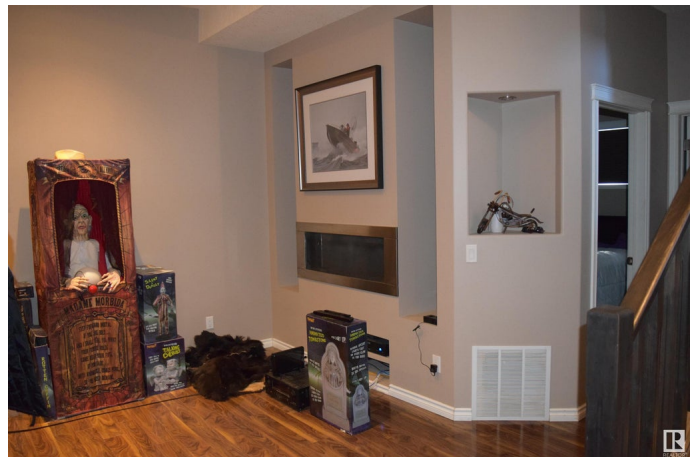
Elinor Lake Resort, Rural Lac La Biche County, AB

"CIVIL ENFORCEMENT SALE" This property at Elinor Lake Resort and is being sold "Where-Is, As-Is". This Bi-Level, is approximately 1,778 sq.ft., 2 bedrooms up and 1 in the basement, main floor laundry, large island kitchen with eat-in nook, living room with gas fireplace. Master bedroom with 3 sided fireplace, modern 4-piece en-suite, walking closet and walkout to a covered balcony with outdoor gas fireplace. Finished basement containing a family room, games room, 4-piece bath, bedroom, utility room all with heated floors, large deck with under deck storage and central air. All information and measurements have been obtained from the Lac La Biche County Assessment and/or assumed, and could not be confirmed. "The measurements represented do not imply they are in accordance with the Residential Measurement Standard in Alberta".

Built in 2010

Essential Information

MLS® #	E4367616
Price	\$285,000
Bedrooms	3
Bathrooms	2.50
Full Baths	2



Half Baths	1
Square Footage	1,778
Acres	0.10
Year Built	2010
Type	Rural
Sub-Type	Detached Condominium
Style	Bi-Level
Status	Active

Community Information

Address	49 65275 Rr 114a
Area	Rural Lac La Biche County
Subdivision	Elinor Lake Resort
City	Rural Lac La Biche County
County	ALBERTA
Province	AB
Postal Code	T0A 2L0

Amenities

Features	See Remarks
----------	-------------

Interior

Interior Features	ensuite bathroom
Heating	Forced Air-1, In Floor Heat System, Natural Gas
Stories	2
Has Basement	Yes
Basement	Full, Finished

Exterior

Exterior	Wood
Exterior Features	See Remarks
Construction	Wood
Foundation	Concrete Perimeter

Additional Information

Date Listed	December 11th, 2023
Days on Market	553
Zoning	Zone 60
Condo Fee	\$1,500

DATA IS DEEMED RELIABLE BUT IS NOT GUARANTEED ACCURATE BY THE REALTORS® ASSOCIATION OF EDMONTON. COPYRIGHT 2025 BY THE REALTORS® ASSOCIATION OF EDMONTON. ALL RIGHTS RESERVED. Trademarks are owned or controlled by the Canadian Real Estate Association (CREA) and identify real estate professionals who are members of CREA (REALTOR®, REALTORS®) and/or the quality of services they provide (MLS®, Multiple Listing Service®)

Listing information last updated on June 16th, 2025 at 2:48pm MDT