

## \$2,250,000 - 10357 82 Avenue, Edmonton

MLS® #E4330122

**\$2,250,000**

0 Bedroom, 0.00 Bathroom,  
Office on 0.00 Acres

Strathcona Junction, Edmonton, AB

Fantastic opportunity to own a 12,175 sq.ft. character retail/office building along Whyte Avenue. - 2-storey building demised into 6 tenant spaces. Building has partial occupancy giving potential to an owner/user looking to occupy or an investor to lease up vacant spaces. - All units including common areas have been renovated within the last 5 years. - Building recently underwent upgraded façade, as well as upgrades to HVAC

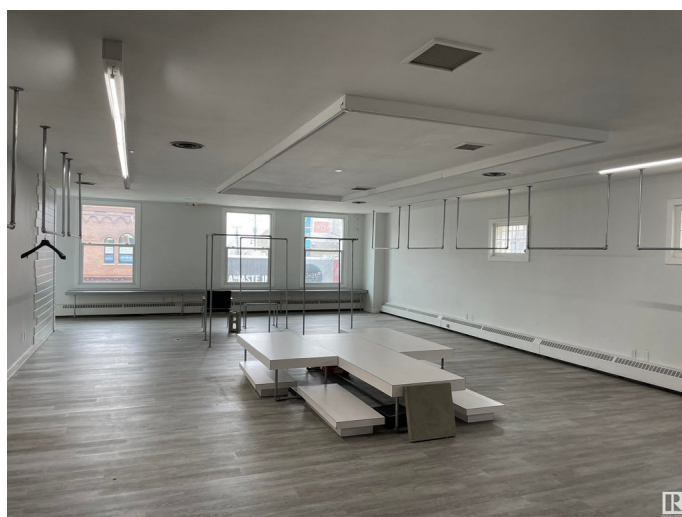
Built in 1911

### Essential Information

MLS® #	E4330122
Price	\$2,250,000
Bathrooms	0.00
Acres	0.00
Year Built	1911
Type	Office
Status	Active

### Community Information

Address	10357 82 Avenue
Area	Edmonton
Subdivision	Strathcona Junction
City	Edmonton
County	ALBERTA
Province	AB



Postal Code            T6E 1Z9

**Exterior**

Exterior                Brick

Construction        Brick

**Additional Information**

Date Listed            March 6th, 2023

Days on Market       880

Zoning                 Zone 41

DATA IS DEEMED RELIABLE BUT IS NOT GUARANTEED ACCURATE BY THE REALTORS® ASSOCIATION OF EDMONTON. COPYRIGHT 2025 BY THE REALTORS® ASSOCIATION OF EDMONTON. ALL RIGHTS RESERVED.Trademarks are owned or controlled by the Canadian Real Estate Association (CREA) and identify real estate professionals who are members of CREA (REALTOR®, REALTORS®) and/or the quality of services they provide (MLS®, Multiple Listing Service®)

Listing information last updated on August 2nd, 2025 at 6:18pm MDT