

## \$89,000 - 54127 Rge Rd 30, Rural Lac Ste. Anne County

MLS® #E4327730

**\$89,000**

0 Bedroom, 0.00 Bathroom,  
Rural on 3.90 Acres

Louden Park, Rural Lac Ste. Anne County, AB

3.9 acre corner lot located in the subdivision of Loudon Park. Zoned as country residential. Treed for privacy. Only 25 minutes to Spruce Grove/Stony Plain. GST applicable on sale. To be sold as is with no warranties or guarantees. Buyer to confirm all details regarding the property are to their satisfaction prior to proceeding with an offer.

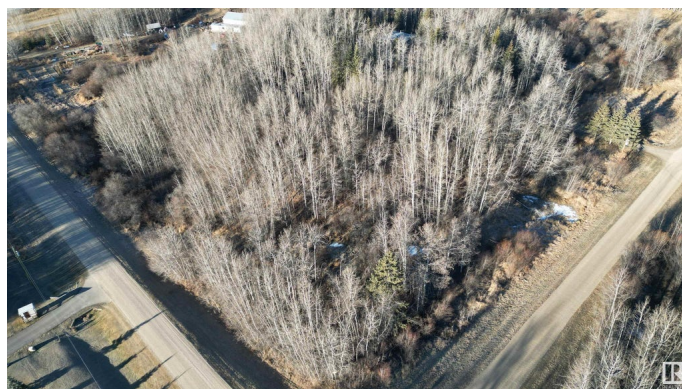
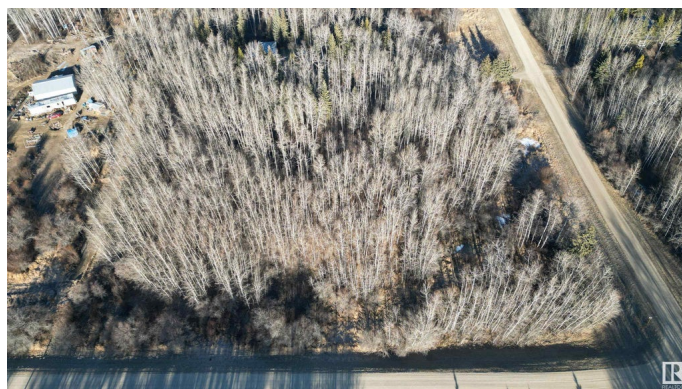
### Essential Information

MLS® #	E4327730
Price	\$89,000
Bathrooms	0.00
Acres	3.90
Type	Rural
Sub-Type	Vacant Lot/Land
Status	Active

### Community Information

Address	54127 Rge Rd 30
Area	Rural Lac Ste. Anne County
Subdivision	Louden Park
City	Rural Lac Ste. Anne County
County	ALBERTA
Province	AB
Postal Code	T0E 0A0

### Exterior



Exterior Features    See Remarks

**Additional Information**

Date Listed                February 14th, 2023  
Days on Market        853  
Zoning                      Zone 70

DATA IS DEEMED RELIABLE BUT IS NOT GUARANTEED ACCURATE BY THE REALTORS® ASSOCIATION OF EDMONTON. COPYRIGHT 2025 BY THE REALTORS® ASSOCIATION OF EDMONTON. ALL RIGHTS RESERVED.Trademarks are owned or controlled by the Canadian Real Estate Association (CREA) and identify real estate professionals who are members of CREA (REALTOR®, REALTORS®) and/or the quality of services they provide (MLS®, Multiple Listing Service®)  
Listing information last updated on June 16th, 2025 at 6:47am MDT