

\$0 - 14220 112 Av Nw, Edmonton

MLS® #E4314132

\$0

Bedroom, Bathroom, 2,066 sqft

Office on 0.00 Acres

Huff Bremner Estate Industrial, Edmonton, AB

â€¢ 2 spaces available - 1,113 sq.ft. or 2,066 sq.ft. â€¢ Tenants have access to common area lounge, auditorium and 4 secure levels of parking â€¢ Lower Level is open concept available immediately â€¢ Second floor is currently shell space ready for interior improvements â€¢ High level of security â€¢ Recently upgraded elevator â€¢ Quick access to Yellowhead Trail, Stony Plain Road and St.Albert Trail â€¢ Parking ratio is approximately 5 stalls per 1,000 sq.ft.

Built in 1950

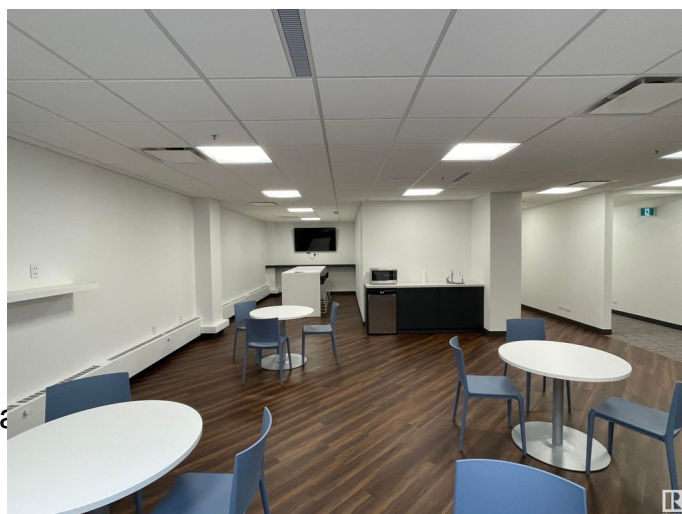
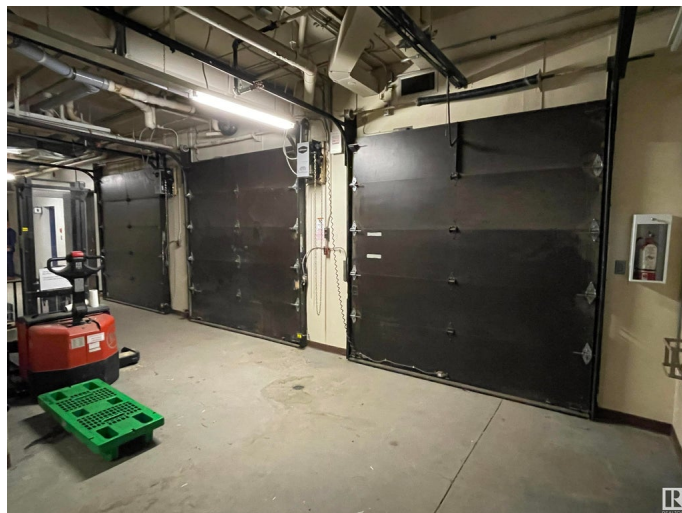
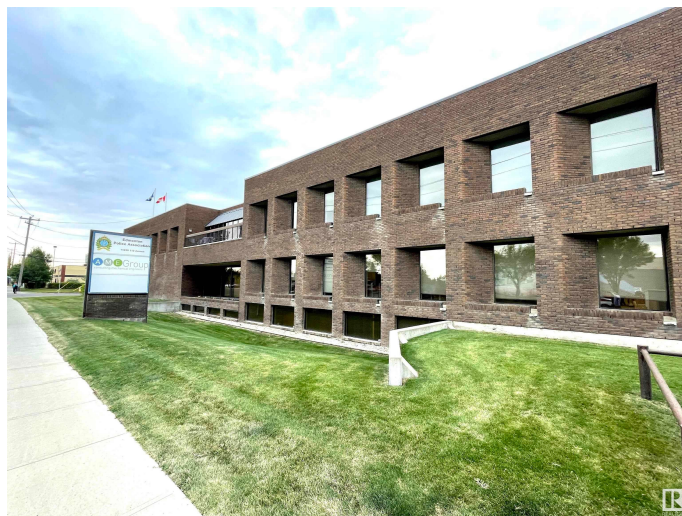
Essential Information

MLS® #	E4314132
Square Footage	2,066
Acres	0.00
Year Built	1950
Type	Office

Community Information

Address	14220 112 Av Nw
Area	Edmonton
Subdivision	Huff Bremner Estate Industrial
City	Edmonton
Province	AB
Postal Code	T5M 2T8

Exterior



Construction Brick/Masonry

Additional Information

Date Listed September 20th, 2022

Zoning IB

DATA IS DEEMED RELIABLE BUT IS NOT GUARANTEED ACCURATE BY THE REALTORS® ASSOCIATION OF EDMONTON. COPYRIGHT 2024 BY THE REALTORS® ASSOCIATION OF EDMONTON. ALL RIGHTS RESERVED.Trademarks are owned or controlled by the Canadian Real Estate Association (CREA) and identify real estate professionals who are members of CREA (REALTOR®, REALTORS®) and/or the quality of services they provide (MLS®, Multiple Listing Service®)

Listing information last updated on May 17th, 2024 at 10:01pm MDT