

# \$0 - 10366 65 Av Nw, Edmonton

MLS® #E4293973

**\$0**

Bedroom, Bathroom, 80 sqft  
Industrial on 0 Acres

Strathcona Junction, Edmonton, AB

Extensive office buildout with small warehouse component ideal for contractors and professional firms requiring storage  
Surface parking on site and street  
Rear yard area with overhead door access  
Optimal access onto Calgary Trail, Whitemud Drive, Anthony Henday and QE2

Built in 1977

## Essential Information

MLS® #	E4293973
Square Footage	80
Acres	0.00
Year Built	1977
Type	Industrial

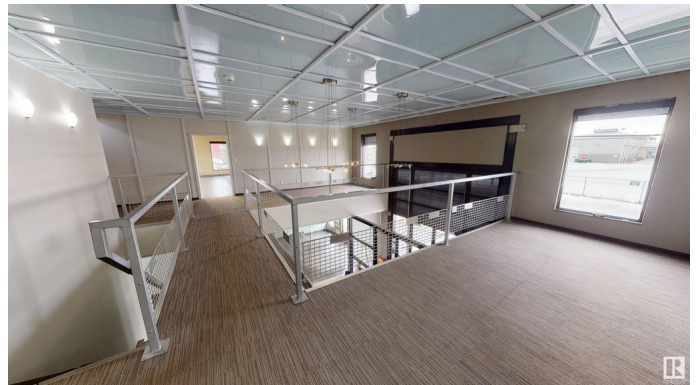
## Community Information

Address	10366 65 Av Nw
Area	Edmonton
Subdivision	Strathcona Junction
City	Edmonton
Province	AB
Postal Code	T6H 1T9

## Exterior

Construction	Concrete Block, Mixed
--------------	-----------------------

## Additional Information



Zoning

CB2

Listing information last updated on August 11th, 2022 at 6:01am MDT